

edgebox

Virtual Hosts
edgeBOX V4.3

Introduction

This document shows how to configure edgeBOX to allow user web pages and for Virtual Host creation.

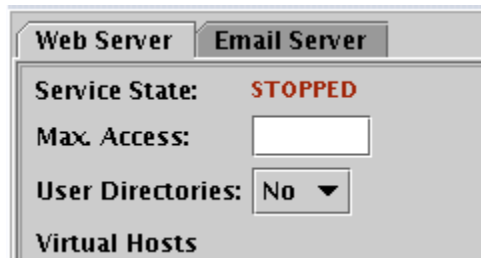
Personal Web pages are created by the user and would typically be accessed via a URL which includes the username.

A Virtual Hosts can be associated with users, but are typically used as different websites in the same Web Server.

Personal Web pages

- Turn on Web Services: Collaboration -> Web Server

If the “Service State” is STOPPED, press the START” button (bottom, right)



- Make sure the “User Directories” is set to “Yes”. If not, set it to Yes and press the Apply (bottom right) button.

A default webpage is created for all users. If the edgeBOX has a LAN IP address of 192.168.90.193, the URL to access a webpage for a user, whose username is “user1”, would be:

<http://192.168.90.193/users/user1>

or you can access it via:

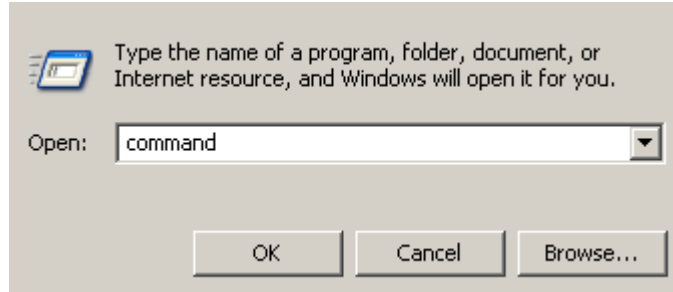
<http://192.168.90.193/~user1>

This should result in a page as follows:

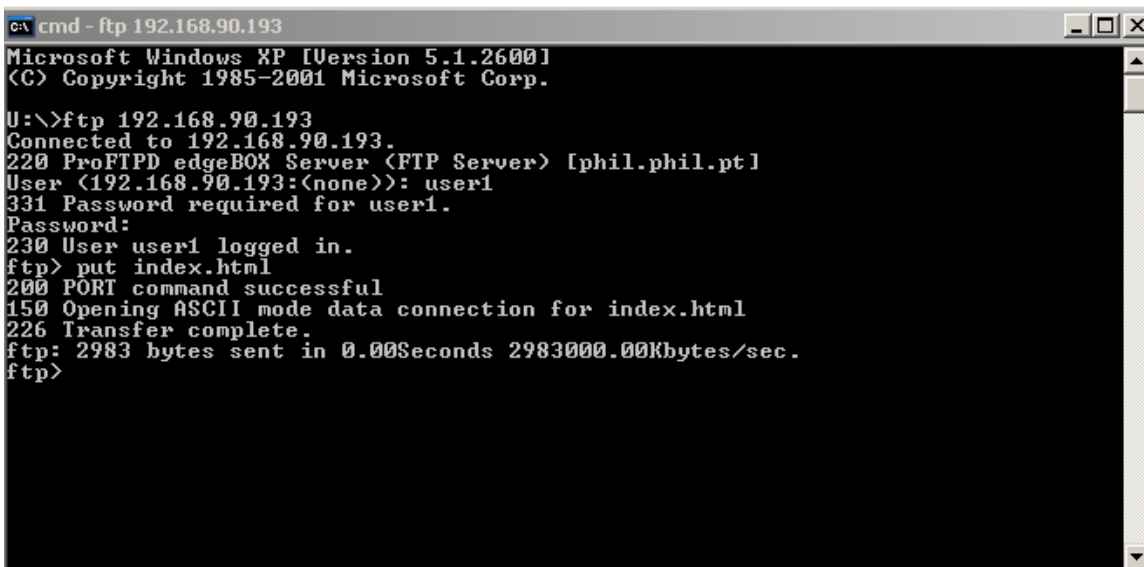
edgebox 

-User home page-

- A user may alter their default web page, by creating the appropriate html and image files on, for example, their PC and uploading these files to their home directory. This is achieved via FTP. You may use an FTP client to assist, or simply upload files from a Windows command window. To do this, go to the Start Menu on the Windows screen and Select Run. Type command into the resulting window and press OK.



The following window should open:



- You should change directory to the directory (on the PC) where your new files are, that you wish to upload to the edgeBOX..

Ftp to the edgeBOX with: [ftp 192.168.90.193](ftp://192.168.90.193) (Our example edgeBOX LAN IP address) and login with your edgeBOX username (user1) and password. After logging on, the user will automatically be placed in their home directory.

- Upload (with the put command) the files to the edgeBOX.

Note1: The initial directory you enter after logging in to the edgeBOX, is the root web directory for the user. This is where you should place your index.html or index.php file.

Note2: Unix (the operating system which edgeBOX uses) is case sensitive, thus if you upload a file called INDEX.HTML, it will NOT overwrite the default index.html file.

- Open a browser and enter the following URL: <http://192.168.90.193/users/user1>

You should be able to see the changes you have made.



TEST PHP Program

Hello world!

In this example, I uploaded a file called index.php and removed the index.html file. The index.php file contained the following:

```
<html>
<h3>TEST PHP Program</h3>
  <? echo "Hello world!"; ?>
</html>
```

Virtual Hosts

- Used mainly for defining Company/Main Websites
- Go to Collaboration -> Web Server menu to view the following panel:

The screenshot shows a configuration window for the Web Server. At the top, there are tabs for 'Web Server' and 'Email Server'. Below the tabs, the 'Service State' is 'RUNNING'. 'Max. Access' is set to '150' and 'User Directories' is set to 'Yes'. The main area is titled 'Virtual Hosts' and contains a table with the following headers: 'Virtual Host', 'Server Name', 'Document Root', and 'Email'. Below the table are buttons for 'New', 'Edit', and 'Delete'. There is also a section for 'Change webmaster password' with input fields for 'New Password' and 'Confirm Password', and a 'Change' button. At the bottom right, there are 'Stop' and 'Apply' buttons.

This panel allows you to configure virtual hosts. With virtual hosts, you are able to have the same web server running multiple websites.

- Start the HTTP service (if it is not running)
- Set a webmaster password and press the “Change” button
- Press the “New” button to create a virtual host

After selecting the “New” button, a popup window will appear, requesting that you enter the following information:

- Virtual Host. Select from the list of values. Possible values are: LAN, WAN and Both. We will select Both, to allow web access to the new site for both internal and external users.
- Server Name: The name of this virtual host. (Note that an A record or a CNAME record has to be added to the DNS). For example, if your domain is example.pt, and you add a virtual host for “info.example.pt”, then you will have to add an entry for host “info” pointing to edgeBOX’s IP address.
- Document Root: the location of the files in the file system. All websites will be located under /home/wwwhost, which is the filesystem directory where the webmaster user will be placed, after logging on through FTP. The Document Root is specified relative to this directory. For example, the document root for the intranet website is “intra”. Taking the example from the previous option, if you create a directory under “/home/wwwhost” called “info” to place the virtual host files, then the document root will be “info”.

Email: the email address for them person responsible for this domain.~

I have a publicly registered a domain called “example.pt” and wish to allow everyone access to a URL which will allow them to view a number of documents. I wish them to have access via the URL: info.example.pt

To achieve this, fill in the form as shown below

Virtual Host Information

Virtual Host: Both ▼

Server Name: example.pt

Document Root:

User:

Path: info

Email: root@example.pt

Ok Cancel

Select OK and then the Apply button to create the virtual host (as shown below).

Virtual Host	Server Name	Document Root	Email
LAN WAN	example.pt	/home/wwwhost/info	root@example.pt

As I have previously registered (See below) the example.pt domain, I can prefix this domain with anything (*The only characters that a domain name can contain are letters, numbers, and hyphens. Spaces and other special characters are not allowed. Domain names are not case-sensitive.*) and create another virtual host (eg contacts.example.pt or toys.example.pt)

- Ftp to the edgeBOX (as webmaster) and create a directory with `mkdir info`
This directory is NOT automatically created for you.
Also, create this directory from your default login directory- ie do not change directory on the edgeBOX, before you create your virtual host Change into this directory and add content (index.html and image files etc)

This new site will be accessed by the following URL: info.example.pt , but is not yet 'available'.

We now need to add appropriate entries for DNS, so that users can access the site. We can do this by adding them to our local DNS server (typically the edgeBOX). If we do this, LAN users will be able to view the site, but external users will be able to view the site only if they are using the edgeBOX DNS, or if the edgeBOX DNS is a publicly available server.

Globally registering your Domain

When you wish to use a domain such as `example.pt`, you must first make sure it is not already in use. There are a number of methods to determine this. One method is to go to the following URL: <http://www.checkdomain.com/> (There are many sites which allow you to check if a domain is already registered)

This particular site returned a query as shown below:

example.pt (Portugal)

The domain that you requested, **example.pt**, is still available! If you would like to use this domain name, we recommend that you reserve it as soon as possible. Please [click here](#) if you would like to reserve **example.pt** now.

Check this domain:

You can now purchase this domain from any of the websites which allow domain purchasing.

Note: A number of countries, such as Portugal, have very stringent requirements for registering a domain. Thus `.pt` domains require quite some effort and have to be your name, or your company registered name, or your registered trademark.

Other domains, typically `.com`, can be purchased almost immediately over the internet.

Before you purchase the domain from an internet company, make sure that the company will host DNS entries for your new domain, or will allow you to specify where the DNS server(s) is/are for this domain (ie the ISP will allow you to specify your edgeBOX as a DNS Server for this domain).

If the company hosts the DNS records, you may have to wait several hours whilst they upload the new batch of DNS records, this is very dependant upon the company and should rarely exceed 12 hours.

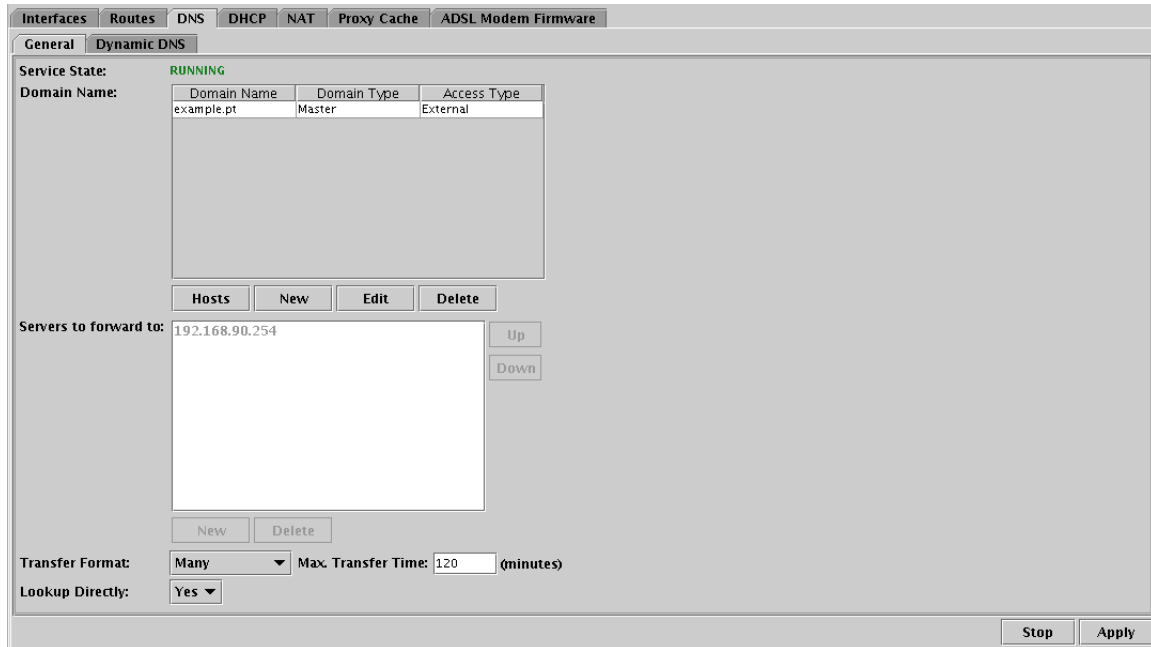
If you are hosting the DNS records on your edgeBOX, you need to inform the company you purchased the domain from, the IP address of your (edgeBOX) DNS Server.

The method of doing this varies, but typically involves filling in an interactive form to specify your DNS IP address. This is usually done at the time of purchase.

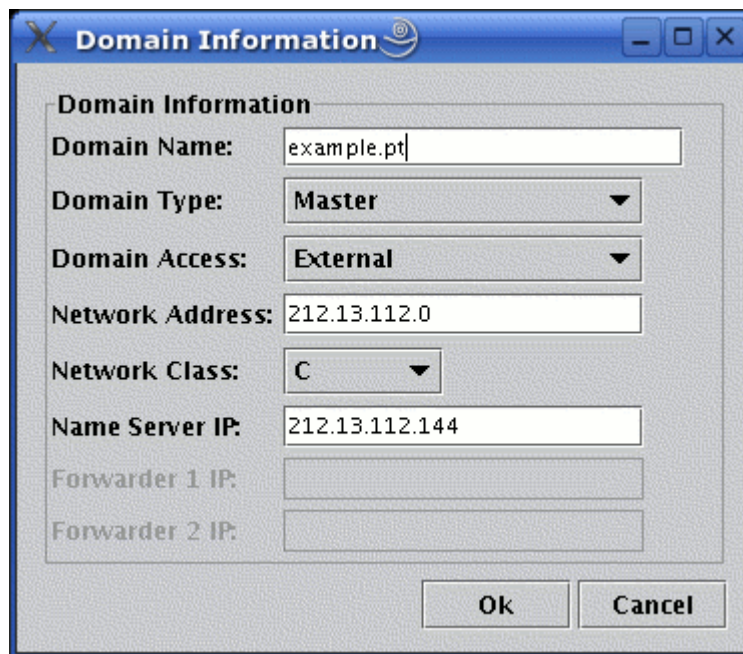
EdgeBOX DNS Configuration

This is only required if you want your website to be publicly available and you wish to host your own DNS entries for the new domain.

- Make sure that the DNS service is running (Go to the Router -> DNS panel)
- Create a new domain



- Add the entries as shown below:

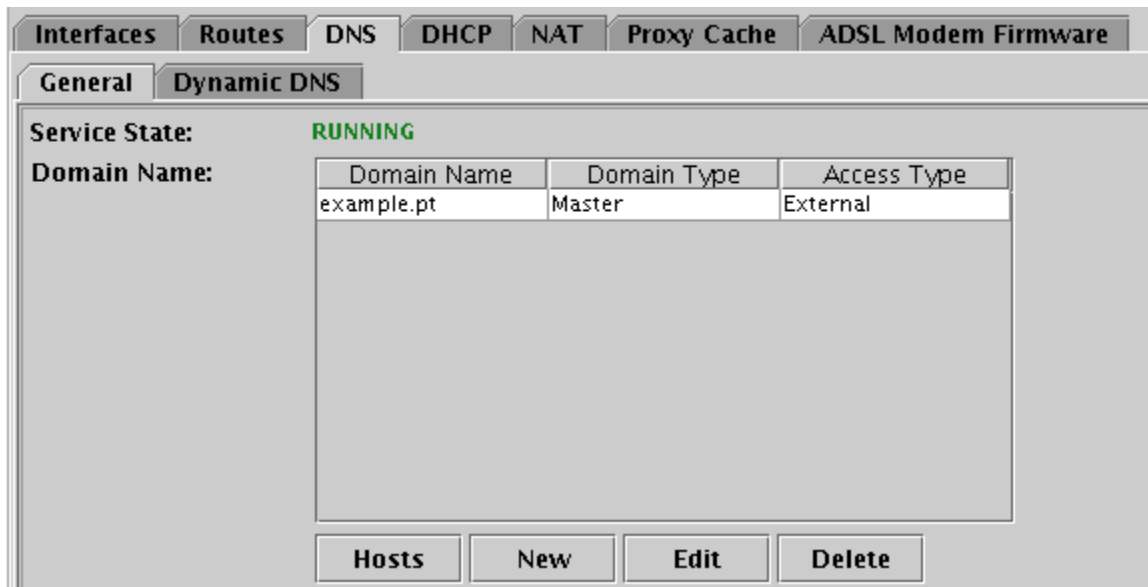


This has added an entry for the new virtual host and is specified as the Master for this domain. This means that this DNS server is authoritative for this domain.

External is selected to allow external users to query your DNS.

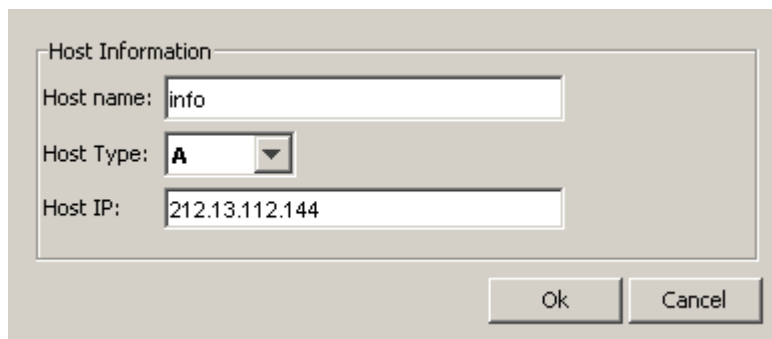
The last three fields specify your network settings.

Select OK and then the Apply button, to apply the settings. You will have an entry as shown below:



You now need to add records to this domain, to specify each of your virtual hosts. In this case, we have one virtual host, which is "info".

- Highlight the new domain (example.pt) and press the Hosts button.
- Enter the fields as shown below and the press the OK button



This should result in a panel with the following settings (at least for info – assuming the WAN address of the edgeBOX is 212.13.112.144 – a public IP address).

DNS Host Information		
Name	IP/Host	Type
mail	212.13.112.144	A
	mail.example.pt	MX
ns	212.13.112.144	A
	ns.example.pt	NS
info	212.13.112.144	A

Select OK and then the Apply button

For an overview on DNS, the following sites are recommended.

<http://www2.rad.com/networks/1998/dns/main.html#whatisdns>

<http://www.gnc-web-creations.com/dns-tutorial.htm>