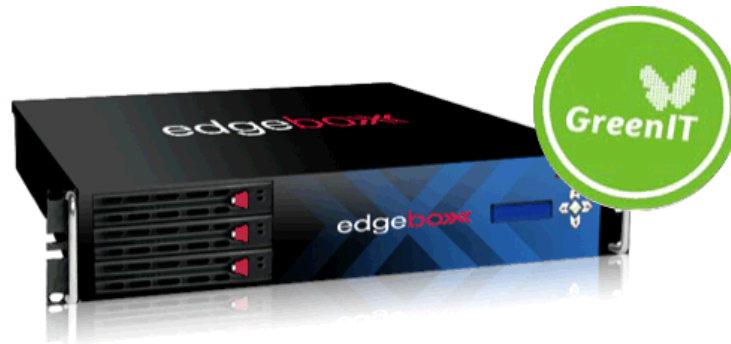


Dramatically simplifying voice and data networking



# edgebox 4.6.3

DEFAULT CONFIGURATIONS AND EXAMPLES

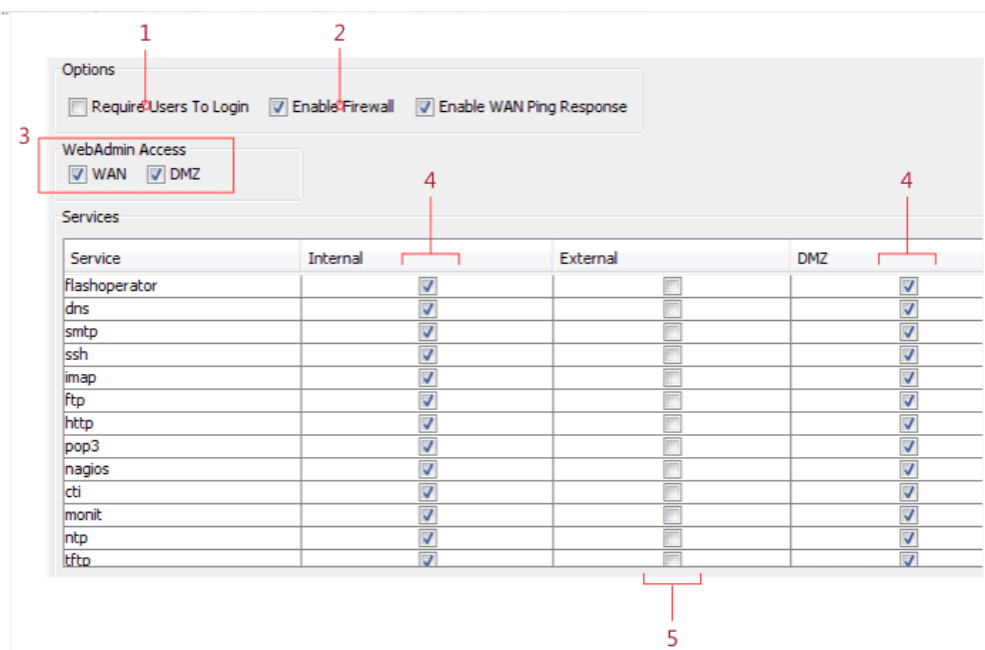


# Default Configurations

edgeBOX 4.6.3 comes with several new default values and default configurations. These values and configurations are intended to help new users, thereby decreasing time spent on the initial configuration.

## The firewall is running

The firewall is **switched ON** and has already a **typical configuration defined**:



Firewall's default configuration

- 1 – Users don't need to login and authenticate to use the network services. Any user with a computer on the local network can access the network services.
- 2 – The firewall is switched ON.
- 3 – – You can access the web administration interface of the edgeBOX from both the local network (LAN) and from a computer on the DMZ or from an external network (WAN).
- 4 – Users can access all the network services from computers on the local network and the DMZ.
- 5 – Users cannot access the network services if they are on an external network. For example, users cannot get emails to Outlook or another mail client from home because the pop3 service is not allowed in external networks.

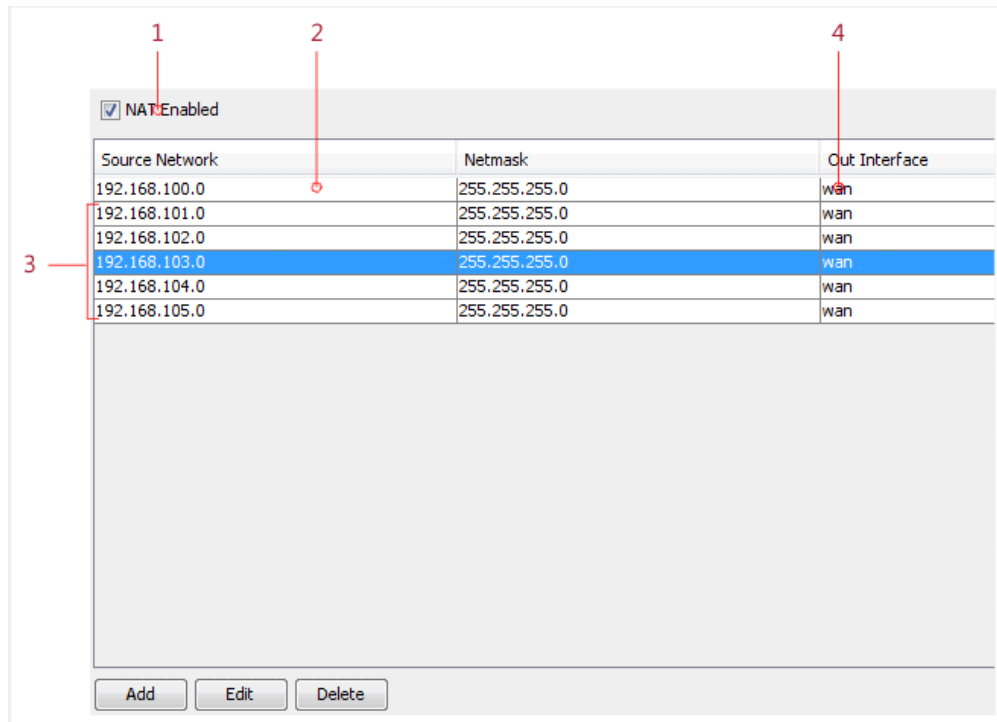


To change the properties of the firewall, go to the Security menu and the Firewall tab. For additional help, refer to the Firewall topic of edgeBOX's Help.

## NAT is enabled

NAT is **enabled and configured for the local network and for each of the VLANs**. This way, the computers in your network can communicate with external networks, as the Internet, right away, without the need to configure anything.

This means that the users can, for example, visit websites from the computers that are on the local network or on one of the VLANs, despite the computers having private IP addresses.



NAT configuration panel

- 1 – NAT is active.
- 2 – Rule that allows communication between computers on the local network and external networks.
- 3 – Rules for each of the VLANs that allow communication between computers on the VLANs and external networks.
- 4 – Indicates the scope to which computers in the internal network can communicate to. WAN means they can communicate with exterior networks as the Internet.



To change the NAT properties, go to the NAT tab of the Router menu.

## File Sharing and Windows Domain are active

The File Sharing and Windows Domain functionalities are active by default because edgeBOX's **SAMBA service is running**.

**File Sharing** allows you to create shared folders on the edgeBOX that can be used by the network users to share documents.

The **Windows Domain** service allows edgeBOX to interact with other hosts as if it was a Windows server. Its **default configuration** is:

- The workgroup is "EBOX". It is the work group that Windows clients must belong to access the edgeBOX services.
- edgeBOX's server name is "edgeBOX Server". It is a brief description to make it easier to identify edgeBOX when browsing the network.
- The PDC Support option is selected. This means that edgeBOX is acting as a Windows primary domain controller.



To stop the SAMBA service or change the definitions of edgeBOX's Windows Domain or File Sharing functionalities, go to the Storage & Print menu.

## The WIFI network is enabled

edgeBOX wireless allows you to make edgeBOX work as an Access Point and provide a wireless network.

By default, edgeBOX's wireless network is active and it has already an example configuration set. This way, you can immediately start providing wireless access on your office, without having to configure anything on the edgeBOX.

mybusiness	
SSID:	<i>mybusiness</i>
Channel:	11
Authentication:	WPA
Network Key:	<i>mydemokey</i>

Settings of the example wireless network

**To connect to the wireless network** users just have to connect to the *mybusiness* network that will be available in the wireless networks management local of their operating system and authenticate with the password *mydemokey*.



To change the status or the settings of the wireless network go to the WIFI menu.

## VLANs have new tag values

Following known best practices, the tags of the VLANs are now *4001* (for VLAN\_A), *4002* (for VLAN\_B), *4003* (for VLAN\_C), *4004* (for VLAN\_D) and *4005* (for VLAN\_E).

The tag of the Default VLAN has not changed: it continues to be tag 1. This is because most common switches by default mark the traffic for the Default VLAN with the tag 1 and out-of-box they have all ports in this Default VLAN.

In edgeBOX, the default VLAN is the same as the LAN. This way, when you first install edgeBOX and connect it to a switch, all the ports will be part of the LAN.

# Examples

In order to make it simpler understand the configuration, edgeBOX 4.6.3 provides a list of examples. For instance, you should find example users, example phone extensions, example shared folders, etc.

## Users

There are two example users created:

John Doe		Jane Doe	
Username:	<i>user</i>	Username:	<i>user2</i>
Password:	<i>password</i>	Password:	<i>password</i>
Access Profile:	generic	Access Profile:	generic
Access to:	All services	Access to:	All except VoIP
Phone Extension:	<i>1000</i>	Phone Extension:	-

Settings of the each example user

You can use these example users to check out how regular users are generally configured and to do quick experiments. For example, you can force user authentication to access the network and then try to log in with one of example users.



To edit the properties of the example users or to delete them, go to the Users tab in the NAC menu.

## Phone Extensions

There are three example phones extensions created:

user		room		desk	
Extension:	<i>1000</i>	Extension:	<i>1010</i>	Extension:	<i>1020</i>
Password:	<i>1000</i>	Password:	<i>1010</i>	Password:	<i>1020</i>
Type:	SIP	Type:	SIP	Type:	SIP
Assigned to:	John Doe	Assigned to:	-	Assigned to:	-
Voicemail:	Yes	Voicemail:	No	Voicemail:	No
Voicemail PIN:	<i>1000</i>				

Settings of the each example phone

You can use these example phone extensions to check out how VoIP extensions are configured and to, for example, quick connect three phones to the network and configure them with these example extensions and then try to make calls to test the VoIP network.



To edit the properties of the example phones, or to create new phone extensions go to the VoIP & IP-PBX menu and click the Phones tab.

You can also create phone extensions automatically when you create a new user and you indicate that the user will have VoIP access. This way, the phone extension becomes immediately associated with the user.

For further help, refer to the topics Add or Remove Users and Phones in edgeBOX's Help.

## Conference

A conference allows for multiple network users to make a single call and talk with each others at the same time in this call.

There is an example static conference pre-configured:

Example Conference	
Number:	9010
Type:	Protected Conference
Max members:	10
Administrator PIN:	9911
User PIN:	9910

You can try out this conference to get to know better how conferences work. To try it out, pick up some users of your network and use the phones that are already created on the edgeBOX, for example. Dial on each phone the number of the conference (9010) and introduce the user PIN (9910) and you should be able to talk with all the other users on the conference.



To edit the properties of this conference, go to the VoIP & IP-PBX menu, click the PBX Features tab and then select the Conferences sub tab.

## Call Rules

Call rules are used to define automatic response actions to incoming calls, according to the hour of the day or the day of the week.

edgeBOX comes **already configured with four typical call rules** that are generally defined for most common used scenarios:

Day	
Date:	Monday to Friday
Hour:	09:00 to 17:59
Action:	Forward call to the IVR

Evening	
Date:	Monday to Friday
Hour:	18:00 to 23:59
Action:	Forward call to the IVR

Night	
Date:	Monday to Friday
Hour:	00:00 to 08:59
Action:	Forward call to the IVR

Weekend	
Date:	Saturday and Sunday
Hour:	00:00 to 23:59
Action:	Forward call to the IVR

As you can see, there are three rules for the normal work days, one for the common work period (09:00 to 18:00) and two others for the rest of the day, and one rule that covers the whole weekend.

This way, there will always be a response to the incoming calls, independently if there is anybody to answer the call or not.

Also, depending on the time and day of the call a specific action will be triggered. On our example rules, all calls are forward to edgeBOX's automatic response assistant, the IVR.



To change the settings of the example call rules or to delete them and create new ones, go to the VoIP menu, Inbound Calls tab and Call Rules sub tab.

## SIP Proxy

An example SIP Proxy is already configured with the following settings:

demo-proxy	
Name:	<i>demo-proxy</i>
Host:	<i>sip.edgebox.com</i>
Maximum calls:	1
Codecs:	GSM, ULAW, ALAW
Authentication:	ON
Username:	<i>demo-proxy</i>
Password:	<i>edgebox</i>

Settings of the test SIP Proxy

Besides the SIP Proxy, there is also an example Outbound Route defined:

demo	
Name:	<i>demo</i>
Inbound pattern:	<i>123</i>
Outbound route:	Demo-proxy; 123; 60

Outbound Route to sip.edgebox.com

This is just a test SIP Proxy that connects to an existing online edgeBOX. If you pick up a phone of the network and dial the number *123*, the phone will call the demo call that is served by the online edgeBOX: *sip.edgebox.com*, and you will receive an automatic welcome message.

This SIP Proxy does not allow making phone calls. It is just an example to demonstrate how to configure the steps needed to configure a SIP Proxy.



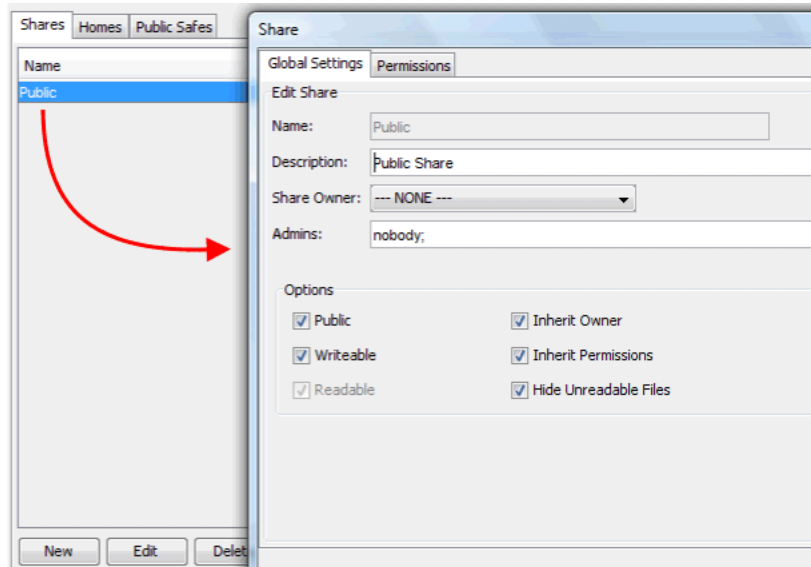
To view or delete this test SIP Proxy, or to create other SIP Proxies, go to the VoIP & IP-PBX menu and then to the SIP Proxies tab tab of the Outbound Calls tab.

## Shared Folder

There is an example shared folder named "Public" that is **accessible to all the network users**. Shared folders are most useful to share large files with your co-workers using the network and edgeBOX's disc space.

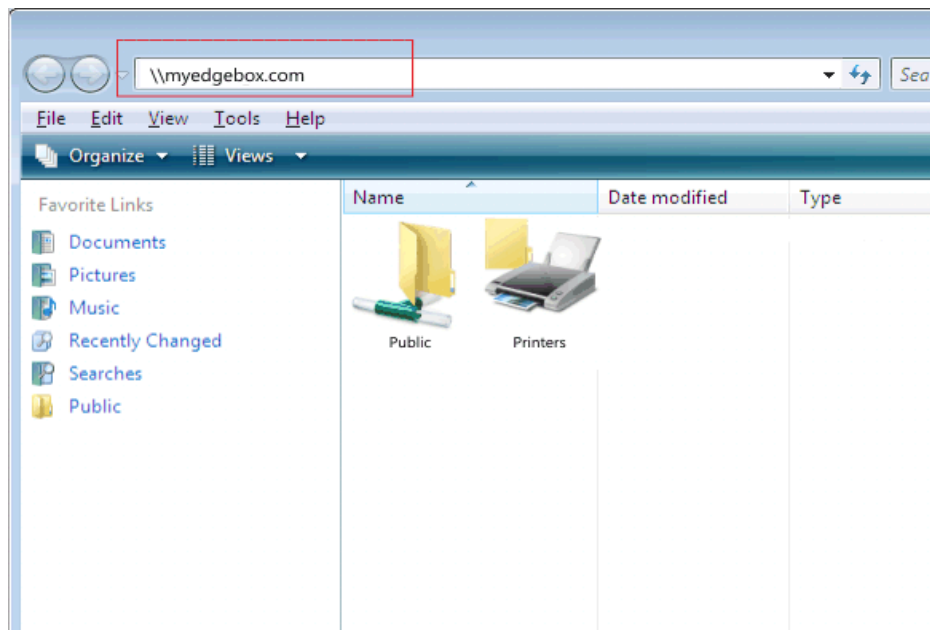
You can open this Shared Folder and view how it is configured so it can be accessible to all the users

of the network:




Properties of the example Shared Folder

You can also try to access the folder from a computer on the local network and try to copy files from it or paste files into it. To do so, type `\\myedgebox.com` on the Windows Explorer's address bar:



Accessing the example Shared Folder

 To edit the properties of this folder or delete it, go to Security, click the File Sharing tab and the Shares sub tab. The folder is on the Shares list.