



edgeBOX

HOW TO... Phone Auto-Configuration edgeBOX v4.6.5



Summary

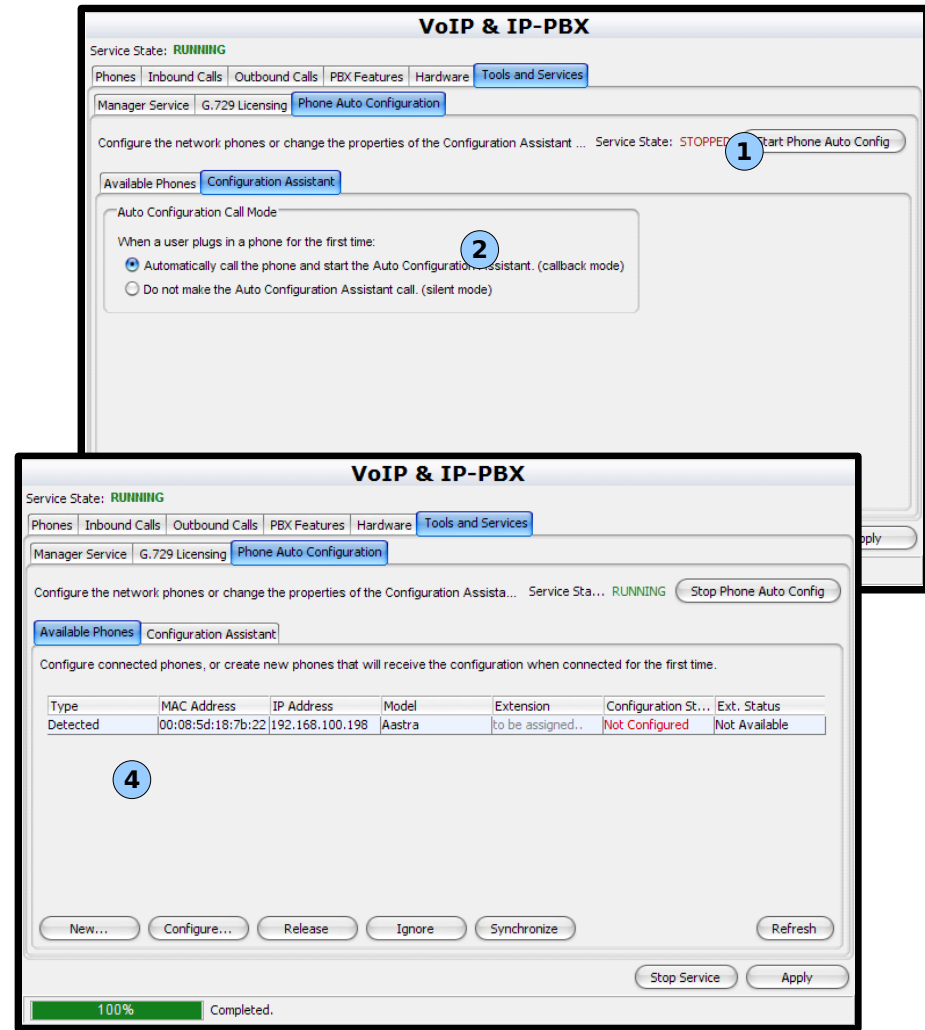
- Overview
- Configuration steps
- Callback assistant mode
- Silent assistant mode
- Pre-provisioning phones
- Checklist
- Which mode shall i use?
- What is sent to the phone?
- Supported phones

Overview

- The Phone Auto Configuration allows you to configure VoIP phones directly on the edgeBOX, avoiding the configuration on the phone itself.
- Each phone downloads a configuration file from the TFTP (Trivial FTP) service.
- It's triggered at the DHCP dialog between the Phone and edgeBOX.
- Introduced in v4.6.0

Configuration steps

- 1) Start the service.
- 2) Select the Call Assistant mode.
- 3) Restart/Plug your phones.
- 4) Manage your phones.



Callback assistant mode

- Plug the phone.
- Phone will be configured with a “callback configuration”.
- Phone rings, pick the call.
- Press “1” to start auto configuration.
- Dial number of an already existing extension.
- Dial password of the extension.
- Phone will reboot and start with the configured settings.

Silent assistant mode

- Plug/Restart the phone
- Your phone will be listed in “Available Phones” panel.
- Assign the phone to the extension.
- Restart/Replug the phone to get the new configuration.

Pre-provisioning Phones

- Independently of your assistant mode you can pre-provision your phones if you know the mac-addresses.
- Pre-provisioned phones will be immediately configured.
- Procedure is:
 - In “Available Phones” panel.
 - Add a new phone, by entering the mac address of the phone and the extension number.
 - When the phone is plugged or restarted it will be configured for that extension.

Checklist

- VoIP open and started.
- DHCP started.
- Phone auto config started.
- NTP is in use... if you want your phones with the right clock settings :)
- Firewall is **not blocking** VoIP, TFTP and NTP services for phones... use VLANs or Default profile.
- Phones have DHCP and TFTP (Trivial FTP) enabled.

Which mode shall i use?

- **Callback**

- When you need your customer to configure the phones.
- When you don't know mac-addresses.
- When setting up a new office on the field.

- **Silent**

- When you already have phones configured in the office.
- When you know mac-addresses.

What is sent to the phone?

- When a phone is auto configured by edgeBOX the following extension properties are setup in the phone:
 - Extension name
 - Extension password
 - Codecs
 - DTMF
 - Timezone
- Only the first sip account of the phone is configured.
- When you edit the extension, edgeBOX will reboot the phone so it can get the new settings.

Supported phones

Notify us
if you've
tested (in)sucessfully
other models.

- Theoretically all Polycom, Grandstream, Linksys and Aastra phones will work.
- Phones are detected by mac-address:
 - Polycom mac-prefix is 00:04:f2:xx:xx:xx
 - Aastra mac-prefix is 00:08:5d:xx:xx:xx
 - Linksys mac-prefix is 00:0e:08:xx:xx:xx
 - Grandstream mac-prefix is 00:0b:82:xx:xx:xx
- Polycom Sound Station is not supported.



edgebox

www.critical-links.com
support@critical-links.com

CALL US: +1 888 4 EDGEBOX (+1 888 433 4326)

Global Headquarters

Critical Links Inc.
695 Route 46 West,
Fairfield, NJ 07004
United States of America
Phone: +1 973 276 9006
sales@critical-links.com



ROUTER



QUALITY OF SERVICE



WIFI



STORAGE & PRINT



VOIP



NETWORK ACCESS



SECURITY



COLLABORATION