



# edgeboXX

## HOW TO...

### Hotbackup

edgeBOX v4.6.0



# Summary

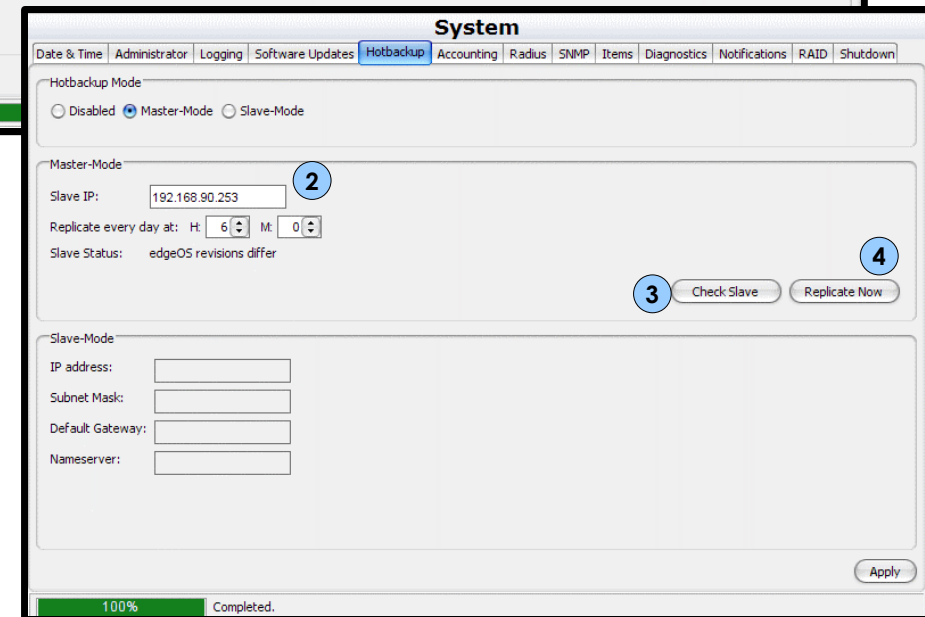
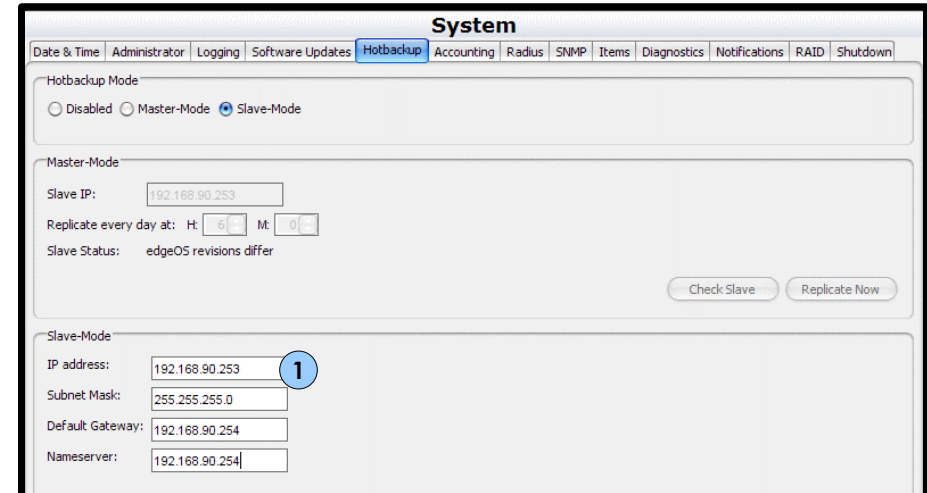
- Overview
- Configuration steps
- Master mode
- Slave mode
- Checklist
- Which services stop during replica?

# Overview

- The Hotbackup allows you to have a second edgeBOX ready to take over if first one fails.
- Operational edgeBOX runs as master, replica as slave.
- Once a day all changes in master's filesystem are copied to the slave.
- RSync is used to replicate filesystem.
- Introduced in v4.6.0

# Configuration steps

1. Configure backup box to Slave Mode, and correspondent network settings.
2. Configure main box to Master Mode, slave's ip address and time of day for replica.
3. Check Slave to make sure slave is found.
4. You may replicate at this stage using Replicate Now button.



# Master mode

- All services working... edgeBOX is fully operational.
- At scheduled time of day all filesystem changes since last replica are copied to the slave.
- Replica operation will use CPU, Network traffic and stop some services so you should schedule it for no service hours.

# Slave mode

- When changing to slave mode, edgeBOX reboots.
- All services are stopped.
- Only access available is CLI (no GUI)...
  - use SSH, serial cable or keyboard and monitor.
  - admin password is the same as the master box.
- To change to master mode:
  - disconnect master.
  - change wires from master to slave (if required).
  - type "hotbackup return to normal mode" in CLI.

# Checklist

- ✓ Master and Slave hardware is equal, and software versions are the same.
- ✓ Update mode of master is not automatic.
- ✓ Slave is placed in the LAN of Master.
- ✓ Slave running in slave mode.
- ✓ Master running in master mode.
- ✓ Check Slave button returns OK.
- ✓ Replica time is scheduled to no service hours.
- ✓ Replacement procedure is defined.

# Stopped services during replica

- User authentication
- Windows shares
- DHCP
- Mail Server
- Web server
- Ftp server
- SNMP

edgebox

www.critical-links.com  
support@critical-links.com

CALL US: +1 888 4 EDGEBOX (+1 888 433 4326)

### Global Headquarters

Critical Links Inc.  
695 Route 46 West,  
Fairfield, NJ 07004  
United States of America  
Phone: +1 973 276 9006  
sales@critical-links.com



ROUTER



QUALITY OF SERVICE



WIFI



STORAGE & PRINT



VOIP



NETWORK ACCESS



SECURITY



COLLABORATION