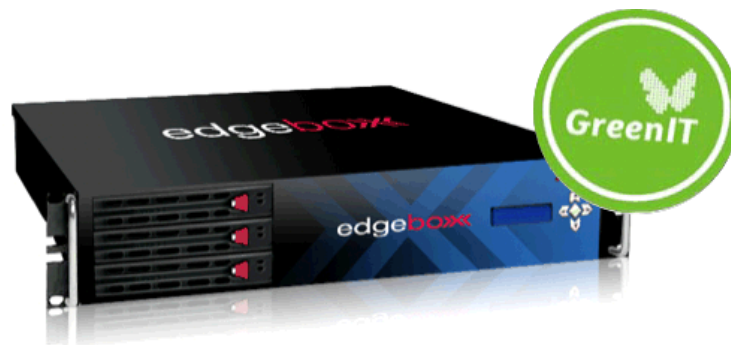




Dramatically simplifying voice and data networking



edgeBOX

edgeBOX – How-To Guide

Configuring the Linksys SPA962 with attendant console SPA932



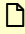

Table of Contents

Initial Notes.....	3
Configuring SPA962	4
Configuring SPA932 – Attendant Console:	8

Initial Notes

1. This guide has been tested with firmware version 6.1.3(a). Keep in mind that different firmware revisions may have different web interface formats and functionalities.
2. This how-to is based on a new phone or one that has been reset to factory defaults.
3. Ensure that you have created the extension that you wish to use with the phone in your edgeBOX first. Take note of the Extension Name and the Password fields that you have entered for the extension while creating it via the Management GUI.
4. Connect the Linksys SPA962 phone to the network and power it up (this phone supports Power over Ethernet – PoE). The phone will boot up and will get an IP address provided by DHCP service from your edgeBOX.



You can view its IP by pressing the **setup key** (identified with a , below the **voicemail key** ) and selecting **Network** (or pressing the “9” key). For the purposes of this guide, we will assume that the phone’s IP Address is “192.168.0.125”.

Configuring SPA962

Please consider the following steps to have your Linksys SPA962 correctly configured and working with your edgeBOX system:

1. Point your browser to the web interface of the phone: (for example <http://192.168.0.125>)
2. Click on “Admin login” on the upper right corner to enter the phone’s administration mode.
3. Click on “advanced” on the upper right corner to enable viewing of advanced configuration options.



5 edgeBOX How-To Guide – Linksys SPA962 with attendant console SPA932 with edgeBOX

4. Click on the “**Ext 1**” tab to configure the first extension.
5. Make sure that at “**General**” section, **Line** field is enabled.
6. On “**Call Feature Settings**” choose “**Yes**” from the drop-down list in **Message Waiting** to use the MWI feature (Message Waiting Indicator).
7. Fill in **Proxy** field on “**Proxy and Registration**” section with the IP address of your edgeBOX or its FQDN (Fully Qualified Domain Name).
8. In the “**Subscriber Information**” section:
 - a. In the “**Display Name**” field enter the name you want to be displayed on the Phone’s display;
 - b. In the “**User ID**” field, enter the Extension Name you defined in edgeBOX to associate with this phone;
 - c. In the “**Password**” field, enter this phone’s authentication password as when you defined the extension.
9. In the “**Dial Plan**” section, delete the content of **Dial Plan** field and enter “(x./ *x./ *x.*x.)” without the quotes.
10. Click the “Submit All Changes” button at the bottom of the page. Your phone will restart. After a few seconds your phone will register in your edgeBOX appliance.

6 edgeBOX How-To Guide – Linksys SPA962 with attendant console SPA932 with edgeBOX

LINKSYS®
A Division of Cisco Systems, Inc. *Linksys Telephone Configuration*

Info System SIP Provisioning Regional Phone **Ext 1** Ext 2 Ext 3 Ext 4 Ext 5 Ext 6 User SPA932

User Login basic | advanced
Personal Directory Call History SPA932 Status

General
Line Enable: yes

Share Line Appearance
Share Ext: private Shared User ID:
Subscription Expires: 3600

NAT Settings
NAT Mapping Enable: no NAT Keep Alive Enable: no
NAT Keep Alive Msg: \$NOTIFY NAT Keep Alive Dest: \$PROXY

Call Feature Settings
Blind Attn-Xfer Enable: no MOH Server:
Message Waiting: yes Auth Page: no
Default Ring: 1 Auth Page Realm:
Conference Bridge URL: Voice Mail Server:
Mailbox ID: CFWD Notify Serv: no
State Agent:
CFWD Notifier:

Proxy and Registration
Proxy: demo.edgebox.com Use Outbound Proxy: no
Outbound Proxy: Use OB Proxy In Dialog: yes
Register: yes Make Call Without Reg: no
Register Expires: 3600 Ans Call Without Reg: no
Use DNS SRV: no DNS SRV Auto Prefix: no
Proxy Fallback Intvl: 3600 Proxy Redundancy Method: Normal

Subscriber Information
Display Name: spa962 User ID: spa962
Password: ***** Use Auth ID: no
Auth ID:
Mini Certificate:
SRTP Private Key:

Dial Plan
Dial Plan: [x*]
Caller ID Map:
Enable IP Dialing: yes Emergency Number:
Undo All Changes Submit All Changes

User Login basic | advanced
Copyright © 1992-2006 Cisco Systems, Inc. All Rights Reserved.
Internet | Modo Protegido: Activado 100%

7 edgeBOX How-To Guide – Linksys SPA962 with attendant console SPA932 with edgeBOX

11. There is one last step to get your SPA962 fully operational with edgeBOX:



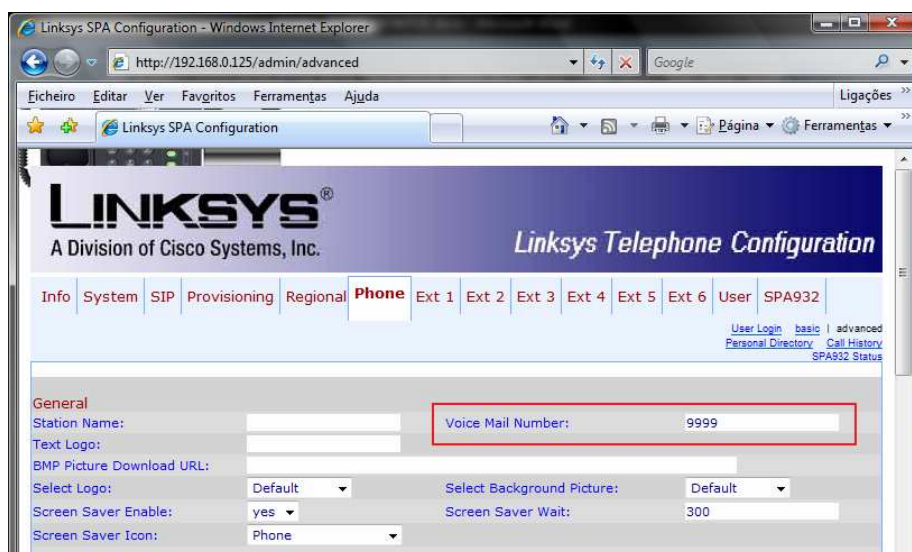
- a. On your SPA962 phone, press the voicemail button (the one with an ☒, selected on the above picture). Your telephone will ask: “Enter Number:” There you must dial **9999**, press “Save” on functions buttons and then “Cancel”.



Note: 9999 is the default extension for edgeBOX’s Voicemail service. You may change it at your edgeBOX’s Management GUI in VoIP & IP-PBX → PBX Features → Voicemail → Voicemail Extension. If you changed the default, please use the new value on your phone.

- b. Alternatively, you may configure the voicemail extension in the SPA962’s web interface:

Select the “**Phone**” tab, and in the “**General**” section enter 9999 in the **Voice Mail Number** field.



Configuring SPA932 – Attendant Console:

Please consider the following steps to have your Linksys SPA932 Attendant Console for SPA962 correctly configured and working with your edgeBOX system:

1. Click on the SPA932 tab;
2. Set the “Unit 2 Enable” to “no” (unless you have a second Linksys SPA932 daisy-chained to the first);
3. Set the “Server Type” field to “Asterisk”;
4. Set the “Call Pickup Code” to “*8” (You will need to change this if you have set a different code under VoIP & IP-PBX → PBX Features → Prefixes);
5. For each extension or user that you want to monitor using the SPA932, enter the configuration script in the appropriate field for each key. For example:

```
fnc=sd+blf+cp;sub=8111@demo.edgebox.com;nme=8111
```

a) Where the **fnc** means the function chosen, in this case speed dial (**sd**), busy lamp field (**blf**) and call pickup (**cp**);

b) **sub** means subscribes for the presence of extension 8111 which is registered to the edgeBOX with the FQDN demo.edgebox.com (you may use an IP Address instead);

c) **nme** is the name given to that extension 8111 (optional).

